

# William Matthews Funerals



# The Difference between a Casket and a Coffin



- Rectangular in Shape
- Hinged Lid



- Six Sided in Shape
- Removeable Lid

25 Caskets  
& Coffins

Traditional  
Style  
Caskets

Australian  
Style  
Caskets

Traditional  
Timber  
Coffins

Traditional  
Veneer  
Coffins

Alternative  
Options

Traditional  
Style  
Caskets



PURITAN



ASHBY POPLAR

Australian  
Style  
Caskets



SENTINEL



REGAL



COLUMBA



CEDAR



MAJESTIC



SOVEREIGN

Traditional  
Timber  
Coffins



DAVIDSON



RHEA



TRADITIONAL

Traditional  
Veneer  
Coffins



CAPELLA



PARKDALE



RICHDALE



SWAN



ORION



BALMORAL



OAKMONT



TWO TONE



CONSORT



FUNDAMENTAL



ECONOMY

Alternative  
Options



AIN



WICKER



MACARTHUR



# Traditional Veneer **COFFINS**

Our Composite Board coffins are constructed from Medium Density Fibreboard (MDF) or Particleboard and have either a paper veneer or painted finish.

# Economy

- Raw finish particleboard
- Fixed plastic handles
- Cotton lining



OPEN VIEW



HANDLE



MOULDING



LINING



# Fundamental

- Paper veneered composite board
- Maple colour, matt finish
- Fixed plastic handles
- Cotton lining



OPEN VIEW



HANDLE



MOULDING



LINING

# Consort

- Paper veneered composite board
- Oak colour, matt finish
- Fixed plastic handles
- Cotton lining



OPEN VIEW



HANDLE



MOULDING



LINING



# Parkdale

- Paper veneered composite board
- White colour, gloss finish
- Plastic swing bar handles
- Cotton lining



OPEN VIEW



HANDLE



MOULDING



LINING

# Richdale

- Paper veneered composite board
- Sapele colour, gloss finish
- Fixed plastic handles
- Cotton lining



OPEN VIEW



HANDLE



MOULDING



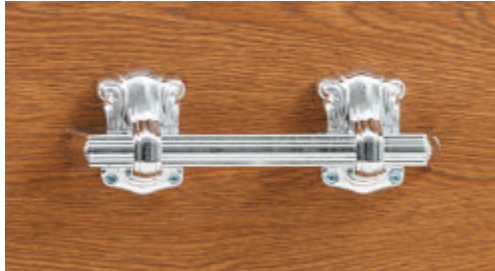
LINING

# Oakmont

- Paper veneered composite board
- Oak colour, gloss finish
- Fixed plastic handles
- Cotton lining



OPEN VIEW



HANDLE



MOULDING



LINING

# Two Tone

- Paper veneered composite board
- Teak with rosewood shade, gloss finish
- Fixed plastic handles
- Cotton lining



OPEN VIEW



HANDLE



MOULDING



LINING



# Balmoral

- Paper veneered composite board
- Sapele colour, gloss finish
- Fixed plastic handles
- Satin lining



HANDLE



MOULDING



LINING





# Swan

- Paper veneered composite board
- White colour, gloss finish
- Timber swing bar handles
- Satin lining



OPEN VIEW



HANDLE



MOULDING



LINING

# Orion

- Paper veneered composite board
- Rosewood colour, gloss finish
- Timber swing bar handles
- Satin lining



OPEN VIEW



HANDLE



MOULDING



LINING

# Capella

- Paper veneered composite board
- Jarrah colour, gloss finish
- Plastic swing bar handles
- Satin lining



OPEN VIEW



HANDLE



MOULDING



LINING



# ALTERNATIVE OPTIONS

These caskets and coffins provide a simple design for families seeking a natural alternative.



# Ain

- Solid plantation pine
- Raw finish
- Six rope handles
- Biodegradable calico lining



OPEN VIEW



HANDLE



MOULDING



LINING



# Wicker

- 100% basketry wicker
- Six rope handles
- Wooden nameplate
- Biodegradable calico lining



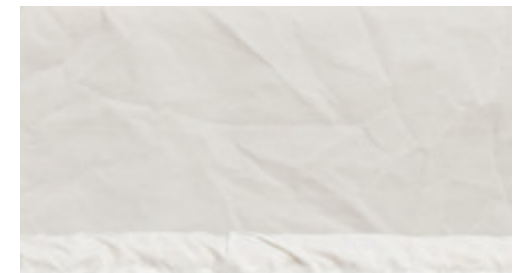
OPEN VIEW



HANDLE



MOULDING



LINING

# Macarthur

- Pure new wool outer layer
- Strong recycled cardboard frame reinforced with a composite board base
- Cotton lined with woolen mattress and pillow



OPEN VIEW



HANDLE



MOULDING



LINING

A dark blue background with a large, semi-transparent circular graphic on the left side. Inside the circle is a silhouette of a tree with many branches and leaves. The text is white and positioned to the right of the circle.

# Traditional Timber **COFFINS**

Our traditional timber coffins are crafted from a selection of high grade Tasmanian Blackwood, Cedar, and plantation grown Radiata Pine.

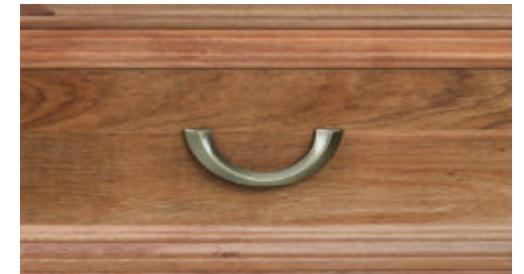


# Rhea

- Solid Tasmanian blackwood
- Low sheen, natural finish
- Timber swing bar handles
- Satin lining



OPEN VIEW



HANDLE



MOULDING



LINING

# Davidson

- Solid plantation pine lid
- Timber veneered composite board sides
- Rosewood colour, gloss finish
- Timber swing bar handles
- Satin lining



OPEN VIEW



HANDLE



MOULDING



LINING



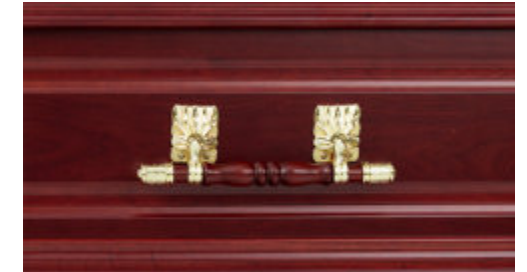


# Traditional

- Solid cedar
- Low sheen, natural finish
- Timber swing bar handles
- Satin lining



OPEN VIEW



HANDLE



MOULDING



LINING



# Australian-Style **CASKETS**

Our Australian-style casket range has been designed and constructed to reflect the unique cultural and natural influences of Australia. Our caskets are constructed of wood such as Pine, Cedar and Blackwood.

# Sentinel

- Solid plantation pine
- Walnut colour, gloss finish
- Timber swing bar handles
- Satin lining



OPEN VIEW



HANDLE



MOULDING



LINING

# Sovereign

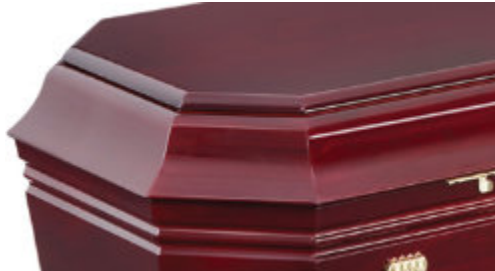
- Solid plantation pine
- Rosewood colour, gloss finish
- Timber swing bar handles
- Satin lining



OPEN VIEW



HANDLE



MOULDING



LINING



# Majestic

- Solid plantation pine
- White colour, gloss finish
- Timber swing bar handles
- Satin lining



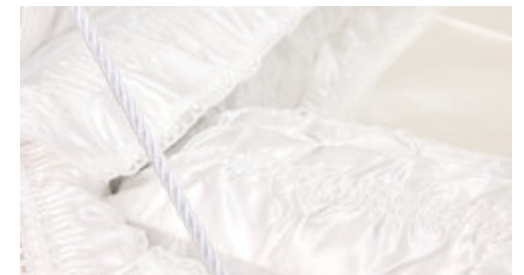
OPEN VIEW



HANDLE



MOULDING



LINING

# Cedar

- Solid cedar
- Cedar colour, satin finish
- Timber swing bar handles
- Satin lining



OPEN VIEW



HANDLE



MOULDING



LINING

# Regal

- Solid cedar
- Walnut colour, gloss finish
- Metal swing bar handles
- Satin interior



OPEN VIEW



HANDLE



MOULDING



LINING



# Columba

- Solid Tasmanian blackwood
- Low sheen, natural finish
- Timber swing bar handles
- Satin lining



OPEN VIEW



HANDLE



MOULDING



LINING





# Traditional-Style **CASKETS**

Our traditional-style range is produced in North America from solid poplar and 16 gauge steel.

# Ashby Poplar

- Made in North America
- Solid poplar
- American cherry, high gloss finish
- Domed half top
- Slightly smaller European dimensions
- Timber handles on all sides
- Champagne linen interior



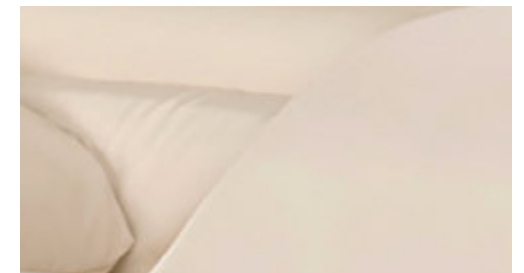
OPEN VIEW



HANDLE



MOULDING



LINING

# Puritan

- Made in North America
- 16 gauge steel
- Brushed copper glow and autumn haze finish
- Artubus velvet interior



OPEN VIEW



HANDLE



MOULDING



LINING





[williammatthewsfunerals.com.au](http://williammatthewsfunerals.com.au)